

# 07

## Swell case cup & PET cup



# Swell case cup

## Swell case cup

Cups can be made of the materials listed below using metal molds shown on the following page onward.  
Choose the material that suits the usage.  
Contact us for a proposal on the best material that caters to your need.

[ Main use Baking, Cake & Food cup ]

[Paper list] Select the shape and size from the table on the following page onward.

Photo	Material	Features	Main use	Baking aptitude	Printing aptitude
	Bleached glassine paper	<ul style="list-style-type: none"> <li>Highly transparent and shiny</li> <li>Low cost</li> </ul>	<ul style="list-style-type: none"> <li>Mould for breads and cakes</li> <li>Paper liner</li> <li>For food wrapping in general</li> </ul>	○	△ Offset printable
	Unbleached glassine paper	<ul style="list-style-type: none"> <li>Unbleached glassine paper</li> <li>Natural and plain texture</li> </ul>	<ul style="list-style-type: none"> <li>Mould for breads and cakes</li> <li>Paper liner</li> <li>For food wrapping in general</li> </ul>	○	△ Offset printable
	Siliconized glassine paper	<ul style="list-style-type: none"> <li>Coated by <b>silicone on single-side</b> of glassine</li> <li>Easy to remove; comes off easily from baked goods</li> </ul>	<ul style="list-style-type: none"> <li>Mould for breads and cakes</li> <li>Paper liner</li> <li>For food wrapping in general</li> </ul>	○	△ Gravure printing only
	Colored and siliconized glassine paper / pink	<ul style="list-style-type: none"> <li>Coated by <b>silicone on single-side</b> of colored glassine</li> <li>Silicone coating makes it easier to remove</li> </ul>	<ul style="list-style-type: none"> <li>For holding chocolates</li> <li>Paper liner</li> <li>For food wrapping in general</li> </ul>	×	△ Gravure printing only
	Colored and siliconized glassine paper / yellow				
	Colored and siliconized glassine paper / orange				
	Colored and resin coated glassine paper / blown	<ul style="list-style-type: none"> <li>Chocolate-colored glassine paper</li> <li>The surface is coated to reduce color loss and improve removability</li> </ul>	<ul style="list-style-type: none"> <li>For holding chocolates</li> <li>Paper liner</li> <li>For food wrapping in general</li> </ul>	×	△ Gravure printing only
	Parchment (Siliconized on single-side)	<ul style="list-style-type: none"> <li>Nordic paper</li> <li>Thick and highly grease-and water-resistant</li> <li>※Siliconized on single-side</li> </ul>	<ul style="list-style-type: none"> <li>Mould for breads and cakes</li> <li>Paper liner</li> <li>Baking sheet</li> </ul>	○	×
	Parchment (Siliconized on both sides)	<ul style="list-style-type: none"> <li>Nordic paper</li> <li>Thick and highly grease-and water-resistant</li> <li>※Siliconized on both sides</li> </ul>	<ul style="list-style-type: none"> <li>Mould for breads and cakes</li> <li>Paper liner</li> <li>Baking sheet</li> </ul>	○	×
	Unbleached and siliconized greaseproof paper	<ul style="list-style-type: none"> <li>Nordic paper</li> <li>Thick and highly grease-and water-resistant</li> <li>※Siliconized on both sides</li> </ul>	<ul style="list-style-type: none"> <li>Mould for breads and cakes</li> <li>Paper liner</li> <li>Baking sheet</li> </ul>	○	×
	Brown slip easy	<ul style="list-style-type: none"> <li>Nordic paper</li> <li>More matt texture than brown-colored and resin coated glassine paper</li> <li>Grease-resistant</li> </ul>	<ul style="list-style-type: none"> <li>For holding chocolates</li> <li>Paper liner</li> <li>For food wrapping in general</li> </ul>	×	○ Offset printable
	Bleached greaseproof paper	<ul style="list-style-type: none"> <li>Highly grease-resistant</li> <li>Suitable to printing and printing by a small lot available</li> </ul>	<ul style="list-style-type: none"> <li>Mould for breads and cakes</li> <li>Paper liner</li> </ul>	○	○ Offset printable
	PET laminated paper Only available for the items marked by ○	<ul style="list-style-type: none"> <li>Inside laminated by PET film</li> <li>The PET film inside increases resistance to oil and water</li> <li>Retains shape and <b>no metal mold needed when baking</b></li> </ul>	<ul style="list-style-type: none"> <li>Mould for breads and cakes</li> <li>For food wrapping in general</li> </ul>	○	○ Offset printable
	PET film Only available for the items marked by ○	<ul style="list-style-type: none"> <li>0.025mm-thick PET film</li> <li>Transparent and heat-resistant</li> <li><b>Suppresses static electricity</b></li> </ul>	<ul style="list-style-type: none"> <li>Mould for breads and cakes</li> <li>For food wrapping in general</li> </ul>	○	×

**Make To Order**

- All swell case cups are made to order.
- Logical MOQ (The manufacturing lot) ※ Glassine paper standard example. This may slightly change depending on paper.
- PET cups and PET film cups are only available for the items marked by ○.

Round				
Product name	size (mm/inch)	Logical MOQ (The manufacturing lot) pcs × set	PET cup	PET film cup
No.3 short	21/0.8 × 14/0.6	1000 × 284		
No.3 tall	21/0.8 × 17/0.7	1000 × 251		
No.240	24/1.0 × 16.5/0.7	1000 × 66		
No.242	24/1.0 × 21.5/0.8	1000 × 66		
No.271	27/1.1 × 17.5/0.7	1000 × 66		
No.272	27/1.1 × 21.5/0.8	1000 × 66		
No.270	27/1.1 × 26.5/1.0	1000 × 66		
No.4 short	30/1.2 × 13/0.5	1000 × 251		
No.4 medium short	30/1.2 × 14/0.6	1000 × 219		
No.4 tall	30/1.2 × 18.5/0.7	1000 × 160		
No.T302	30/1.2 × 20/0.8	1000 × 150		
No.322	32/1.3 × 15/0.6	1000 × 66	○	
No.323	32/1.3 × 17.5/0.7	1000 × 66	○	
No.320	32/1.3 × 19/0.8	1000 × 66	○	
No.321	32/1.3 × 21.5/0.8	1000 × 66	○	
No.5 short	33/1.3 × 17/0.7	1000 × 160		
No.5 tall	33/1.3 × 21/0.8	1000 × 135		
No.350	35/1.4 × 20/0.8	1000 × 66	○	
No.352	35/1.4 × 22.5/0.9	1000 × 66	○	
No.353	35/1.4 × 24.5/1.0	1000 × 66	○	
No.351	35/1.4 × 26.5/1.0	1000 × 66	○	
No.383	38/1.5 × 18.5/0.7	1000 × 66	○	
No.380	38/1.5 × 21/0.8	1000 × 66	○	
No.T400	40/1.6 × 15/0.6	1000 × 150		
No.6 short	40/1.6 × 20/0.8	1000 × 119		
No.6 tall	40/1.6 × 25/1.0	1000 × 91		
No.420	42/1.7 × 14/0.6	1000 × 66	○	○
No.421	42/1.7 × 19/0.8	1000 × 66	○	○
No.7 short	44/1.7 × 23/0.9	1000 × 91		
No.7 tall	44/1.7 × 28/1.1	1000 × 71		
No.457	45/1.8 × 19.5/0.8	1000 × 66	○	
No.458	45/1.8 × 25/1.0	1000 × 60	○	
No.451	45/1.8 × 27.5/1.1	1000 × 60	○	
No.459	45/1.8 × 30/1.2	1000 × 60	○	
No.452	45/1.8 × 32.5/1.3	1000 × 50	○	
No.453	45/1.8 × 35/1.4	1000 × 50	○	
No.454	45/1.8 × 37.5/1.5	1000 × 45	○	
No.455	45/1.8 × 39.5/1.6	1000 × 45	○	
No.505	50/2.0 × 15/0.6	1000 × 66	○	○
No.506	50/2.0 × 20/0.8	1000 × 66	○	○
No.8 short	50/2.0 × 25/1.0	1000 × 71		
No.8 tall	50/2.0 × 30/1.2	1000 × 62		
No.500	50/2.0 × 35/1.4	1000 × 45	○	○
No.8 extra tall	50/2.0 × 38/1.5	1000 × 46		

※ Sizes shown are base diameter and height.

**Make To Order**

- All swell case cups are made to order.
- Logical MOQ (The manufacturing lot) ※ Glassine paper standard example. This may slightly change depending on paper.
- PET cups and PET film cups are only available for the items marked by ○.

Product name	size (mm/inch)	Logical MOQ (The manufacturing lot) pcs × set	PET cup	PET film cup
No.800	80/3.2 × 20/0.8	1000 × 45	○	○
No.805	80/3.2 × 22/0.9	1000 × 42	○	○
No.802	80/3.2 × 25/1.0	1000 × 42	○	○
No.803	80/3.2 × 29/1.1	1000 × 36	○	○
No.T800	80/3.2 × 30/1.2	1000 × 34		
No.806	80/3.2 × 35/1.4	1000 × 36	○	○
No.804	80/3.2 × 40/1.6	1000 × 36	○	○
No.17	83/3.3 × 41/1.6	1000 × 25		
No.850	85/3.3 × 26.5/1.0	1000 × 36	○	○
No.851	85/3.3 × 30/1.2	1000 × 36	○	○
No.852	85/3.3 × 35/1.4	1000 × 36	○	○
No.853	85/3.3 × 40/1.6	1000 × 36	○	○
No.18 short	90/3.6 × 15/0.6	1000 × 49		
No.18 tall	90/3.6 × 20/0.8	1000 × 43		
No.904	90/3.6 × 30/1.2	1000 × 36	○	○
No.906	90/3.6 × 35/1.4	1000 × 36	○	○
No.907	90/3.6 × 40/1.6	1000 × 36	○	○
No.19 short	94/3.7 × 36/1.4	1000 × 25		
No.19 medium short	94/3.7 × 40/1.6	1000 × 23		
No.19 tall	94/3.7 × 55/2.2	1000 × 15		
No.1000	100/3.9 × 15/0.6	1000 × 42	○	○
No.1001	100/3.9 × 17/0.7	1000 × 40	○	○
No.1002	100/3.9 × 25/1.0	1000 × 36	○	○
No.1003	100/3.9 × 30/1.2	1000 × 36	○	○
No.20	103/4.1 × 27/1.1	1000 × 28		
No.1050	105/4.1 × 25/1.0	1000 × 36		○
No.1053	105/4.1 × 30/1.2	1000 × 32		○
No.21	106/4.2 × 30/1.2	1000 × 25		
No.1101	110/4.3 × 20/0.8	1000 × 36	○	○
No.1103	110/4.3 × 30/1.2	1000 × 30	○	○
No.1104	110/4.3 × 35/1.4	1000 × 30	○	○
No.1180	118/4.6 × 15/0.6	1000 × 36	○	○
No.1183	118/4.6 × 26/1.0	1000 × 30	○	○
No.1184	118/4.6 × 31/1.2	1000 × 33	○	○
No.1185	118/4.6 × 41/1.6	1000 × 33	○	○
No.1251	125/4.9 × 20/0.8	1000 × 36	○	○
No.1350	135/5.3 × 15/0.6	1000 × 36	○	○
No.1353	135/5.3 × 25/1.0	1000 × 33	○	○
No.1354	135/5.3 × 30/1.2	1000 × 33	○	○
No.1403	140/5.5 × 30/1.2	500 × 48	○	○
No.1505	150/5.9 × 25/1.0	500 × 48	○	○
No.1501	150/5.9 × 35/1.4	500 × 48	○	○
No.1503	150/5.9 × 40/1.6	500 × 48		○
No.22	155/6.1 × 34/1.3	1000 × 14		
No.1602	160/6.3 × 30/1.2	500 × 48	○	○
No.1603	160/6.3 × 40/1.6	500 × 48		○
No.1800	180/7.1 × 15/0.6	1000 × 32	○	○
No.1801	180/7.1 × 20/0.8	1000 × 30	○	○
No.1804	180/7.1 × 40/1.6	500 × 48		○

※ Sizes shown are base diameter and height.

Oval				
Product name	size (mm/inch)	Logical MOQ (The manufacturing lot) pcs × set	PET cup	PET film cup
No.T470 oval	47/1.9 × 28/1.1 × 38/1.5	1000 × 55		
No.5 oval	50/2.0 × 23/0.9 × 20/0.8	1000 × 132		
No.T500 oval	55/2.2 × 26/1.0 × 20/0.8	1000 × 107		
No.6 oval	55/2.2 × 26/1.0 × 24/1.0	1000 × 92		
No.7 oval	61/2.4 × 28/1.1 × 27/1.1	1000 × 73		
No.20 oval	64/2.5 × 26/1.0 × 17/0.7	1000 × 128		
No.8 oval	68/2.7 × 32/1.3 × 30/1.2	1000 × 62		
No.T701 oval	70/2.8 × 30/1.2 × 20/0.8	1000 × 86		
No.700 oval	70/2.8 × 33/1.3 × 30/1.2	1000 × 50	○	○
No.11 oval	70/2.8 × 45/1.8 × 12/0.5	1000 × 100		
No.701 oval	70/2.8 × 45/1.8 × 25/1.0	1000 × 50	○	
No.21 oval	71/2.8 × 52/2.0 × 28/1.1	1000 × 53		
No.9 oval	76/3.0 × 36/1.4 × 30/1.2	1000 × 54		
No.800 oval	80/3.2 × 50/2.0 × 25/1.0	1000 × 50	○	
No.801 oval	80/3.2 × 50/2.0 × 35/1.4	1000 × 40	○	
No.10 oval	87/3.4 × 41/1.6 × 30/1.2	1000 × 45		
No.T900 oval	90/3.6 × 50/2.0 × 30/1.2	1000 × 40		
No.T1000 oval	100/3.9 × 37/1.5 × 18/0.7	1000 × 63		
No.1000 oval	100/3.9 × 65/2.6 × 25/1.0	1000 × 40		
No.1200 oval	120/4.7 × 65/2.6 × 20/0.8	1000 × 40	○	○
No.1201 oval	120/4.7 × 65/2.6 × 25/1.0	1000 × 40	○	○
No.1202 oval	120/4.7 × 65/2.6 × 35/1.4	1000 × 40	○	○
No.1203 oval	120/4.7 × 75/3.0 × 30/1.2	1000 × 40	○	
No.22 oval/short	121/4.8 × 67/2.6 × 31/1.2	1000 × 29		
No.1204 oval	125/4.9 × 75/3.0 × 30/1.2	1000 × 40	○	
No.T1291 oval	129/5.1 × 50/2.0 × 33/1.3	1000 × 30		
No.26 oval	129/5.1 × 50/2.0 × 40/1.6	1000 × 25		
No.29 oval	130/5.1 × 55/2.2 × 22/0.9	1000 × 39		
No.1301 oval	130/5.1 × 80/3.2 × 20/0.8	1000 × 40	○	
No.1401 oval	140/5.5 × 50/2.0 × 35/1.4	1000 × 30	○	
No.30 oval	158/6.2 × 67/2.6 × 31/1.2	1000 × 25		
No.25 oval	160/6.3 × 55/2.2 × 25/1.0	1000 × 32		
No.44 oval	170/6.7 × 50/2.0 × 48/1.9	1000 × 17		
No.27 oval	215/8.5 × 46/1.8 × 41/1.6	1000 × 17		



## Make To Order

- All swell case cups are made to order.
- Logical MOQ (The manufacturing lot) ※ Glassine paper standard example.  
This may slightly change depending on paper.
- PET cups and PET film cups are only available for the items marked by ○.

Product name	size (mm/inch)	Logical MOQ (The manufacturing lot) pcs × set	PET cup	PET film cup
MF350	35/1.4 × 20/0.8	1000 × 66	○	○
MF352	35/1.4 × 26.5/1.0	1000 × 66	○	○
MF401	40/1.6 × 22/0.9	1000 × 66	○	○
MF402	40/1.6 × 24/1.0	1000 × 66	○	○
MF403	40/1.6 × 25/1.0	1000 × 66	○	○
MF404	40/1.6 × 30/1.2	1000 × 60	○	○
MF450	45/1.8 × 19.5/0.8	1000 × 66	○	○
MF451	45/1.8 × 22.5/0.9	1000 × 66	○	○
MF452	45/1.8 × 27.5/1.1	1000 × 60	○	○
MF551	55/2.2 × 25/1.0	1000 × 60	○	○
MF554	55/2.2 × 32.5/1.3	1000 × 45	○	○
MF555	55/2.2 × 34.5/1.4	1000 × 42	○	○
MF650	65/2.6 × 20/0.8	1000 × 60	○	○
MF651	65/2.6 × 22.5/0.9	1000 × 50	○	○
MF652	65/2.6 × 25/1.0	1000 × 50	○	○
MF654	65/2.6 × 29.5/1.2	1000 × 42	○	○
MF700	70/2.8 × 20/0.8	1000 × 50	○	○
MF701	70/2.8 × 22.5/0.9	1000 × 50	○	○
MF702	70/2.8 × 25/1.0	1000 × 45	○	○
MF704	70/2.8 × 30/1.2	1000 × 42	○	○
MF750	75/3.0 × 22.5/0.9	1000 × 45	○	○
MF751	75/3.0 × 24.5/1.0	1000 × 42	○	○
M5 short push-up bottom	78/3.1 × 21/0.8	2000 × 24	○	○
M5 tall push-up bottom	78/3.1 × 26/1.0	2000 × 21	○	○
MF5 short	80/3.2 × 20/0.8	2000 × 24	○	○
MF5 tall	80/3.2 × 25/1.0	2000 × 21	○	○

※ Sizes shown are base diameter and height.

Product name	size (mm/inch)	Logical MOQ (The manufacturing lot) pcs × set	PET cup	PET film cup
No.500 square	52/2.0 × 52/2.0 × 20/0.8	1000 × 50		
No.600 square	62/2.4 × 52/2.0 × 33/1.3	1000 × 40		
No.700 square	75/3.0 × 40/1.6 × 30/1.2	1000 × 40	○	
No.701 square	75/3.0 × 40/1.6 × 35/1.4	1000 × 40	○	
No.T830 square	83/3.3 × 37/1.5 × 20/0.8	1000 × 72		
No.T1370 square	137/5.4 × 46/1.8 × 65/2.6	1000 × 15		
No.T147 square	147/5.8 × 52/2.0 × 27.5/1.1	1000 × 27		
No.T1500 square	150/5.9 × 40/1.6 × 30/1.2	1000 × 28		
No.1500 square	150/5.9 × 40/1.6 × 35/1.4	1000 × 30	○	
No.8 square	182/7.2 × 85/3.3 × 36/1.4	1000 × 17		

Product name	size (mm/inch)	Logical MOQ (The manufacturing lot) pcs × set	PET cup	PET film cup
No.P130 rectangular	130/5.1 × 49/1.9 × 54/2.1	300 × 60		
No.P133 rectangular	133/5.2 × 60/2.4 × 46/1.8	300 × 60		

Product name	size (mm/inch)	Logical MOQ (The manufacturing lot) pcs × set	PET cup	PET film cup
No.5 torte	90/3.6 × 60/2.4 × 25/1.0	1000 × 52	○	
No.6 torte	93/3.7 × 63/2.5 × 20/0.8	1000 × 56	○	
No.7 torte (※)	95/3.7 × 55/2.2 × 20/0.8	1000 × 54	○	
No.8 torte	102/4.0 × 70/2.8 × 23/0.9	1000 × 44	○	

※ No.7 rectangular is right triangle.

Product name	size (mm/inch)	Logical MOQ (The manufacturing lot) pcs × set	PET cup	PET film cup
No.300 bell	30/1.2 × 22.5/0.9	1000 × 66	○	○
No.301 bell	30/1.2 × 26/1.0	1000 × 66	○	○
No.302 bell	30/1.2 × 30/1.2	1000 × 66	○	○

# PET cup

## PET cup



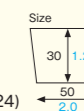
These cups can be filled with batter and baked in the oven, eliminating the need for metal pans and making them highly economical and efficient. After baking, they can be put on display in your store as they are. They're great for baking breads and cakes but also work well with a wide range of other foods.

[ Main use Baking, Cake & Food cup ]



## PTC05030 PET cup

Material Bleached kraft/PET  
Function Waterproof,  
Greaseproof,  
Heat resistance  
Entries 7200pcs (300pcs×24)



PTC05030 [4798820]  
PET cup (polka-dot/pink)



PTC05030 [4798821]  
PET cup (polka-dot/yellow)



PTC05030 [4798822]  
PET cup (polka-dot/blue)



PTC05030 [4798823]  
PET cup (polka-dot/purple)



PTC05030 [4798824]  
PET cup (stripe/pink)



PTC05030 [4798825]  
PET cup (stripe/orange)



PTC05030 [4798826]  
PET cup (stripe/blue)



PTC05030 [4798827]  
PET cup (stripe/purple)

## Inner cup



There are five color variations, all perfect for cup cakes.

[ Main use Baking, Cake & Food cup ]

## SWC251 ~255 Inner cup

Material Bleached kraft/PET  
Function Waterproof,  
Greaseproof,  
Heat resistance  
Capacity 90cc/3.0fl.oz  
Weight 1.47g/0.05oz  
Entries 600pcs (150pcs×4)



SWC251 [1500051]  
Inner cup (white)



SWC252 [1500052]  
Inner cup (cream)



SWC253 [1500053]  
Inner cup (pink)



SWC254 [1500054]  
Inner cup (orange)



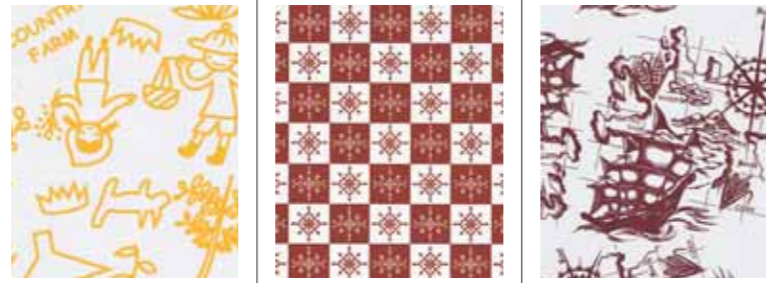
SWC255 [1500055]  
Inner cup (brown)

PET cup



An extensive lineup of designs and sizes is available. Choose the items that best suit your needs.

[ Main use Baking, Cake & Food cup ]  
[ Function Waterproof, Greaseproof, Heat resistance ]



Country farm

Brown block

Ship

※ Items marked with (★) are Make To Order.

Material Bleached kraft/PET

Round									
Size (mm/inch)	Packing unit (pcs x set)	Entries (pcs)	Code	Product number	Code	Product number	Code	Product number	
30/1.2 x 30/1.2	300 x 56	16800	1501100	PTC03020-C	1501200	PTC03020-B	1501300	PTC03020-H	
60/2.4 x 20/0.8	300 x 40	12000	1501101	PTC06020-C	1501201	PTC06020-B	1501301	PTC06020-H	
65/2.6 x 25/1.0	300 x 32	9600	1501102	PTC06520-C	1501202	PTC06520-B	1501302	PTC06520-H	
70/2.8 x 20/0.8	300 x 36	10800	1501103	PTC07520-C	1501203	PTC07520-B	1501303	PTC07520-H	
75/3.0 x 22.5/0.9	300 x 20	6000	1501104	PTC07522-C	1501204	PTC07522-B	1501304	PTC07522-H	
75/3.0 x 30/1.2	300 x 20	6000	1501105	PTC07530-C	1501205	PTC07530-B	1501305	PTC07530-H	
80/3.2 x 20/0.8	300 x 15	4500	1501106	PTC08020-C	1501206	PTC08020-B	1501306	PTC08020-H	
80/3.2 x 25/1.0	300 x 15	4500	1501107	PTC08025-C	1501207	PTC08025-B	1501307	PTC08025-H	
80/3.2 x 30/1.2	300 x 15	4500	1501108	PTC08030-C	1501208	PTC08030-B	1501308	PTC08030-H	
90/3.6 x 20/0.8	300 x 21	6300	1501109	PTC09020-C	1501209	PTC09020-B	1501309	PTC09020-H	
90/3.6 x 30/1.2	300 x 15	4500	1501110	PTC09030-C	1501210	PTC09030-B	1501310	PTC09030-H	
100/3.9 x 30/1.2	300 x 15	4500	1501111	PTC10030-C	1501211	PTC10030-B	1501311	PTC10030-H	
★ 110/4.3 x 20/0.8	300 x 18	5400	1501112	PTC11020-C	1501212	PTC11020-B	1501312	PTC11020-H	
★ 110/4.3 x 25/1.0	300 x 15	4500	1501113	PTC11025-C	1501213	PTC11025-B	1501313	PTC11025-H	
110/4.3 x 30/1.2	300 x 15	4500	1501114	PTC11030-C	1501214	PTC11030-B	1501314	PTC11030-H	
★ 118/4.7 x 15/0.6	300 x 15	4500	1501115	PTC11815-C	1501215	PTC11815-B	1501315	PTC11815-H	
★ 118/4.7 x 21/0.8	300 x 15	4500	1501116	PTC11821-C	1501216	PTC11821-B	1501316	PTC11821-H	
120/4.7 x 30/1.2	300 x 15	4500	1501117	PTC12030-C	1501217	PTC12030-B	1501317	PTC12030-H	
★ 125/4.9 x 15/0.6	300 x 12	3600	1501118	PTC12515-C	1501218	PTC12515-B	1501318	PTC12515-H	
★ 125/4.9 x 20/0.8	300 x 12	3600	1501119	PTC12520-C	1501219	PTC12520-B	1501319	PTC12520-H	
★ 130/5.1 x 20/0.8	300 x 12	3600	1501120	PTC13020-C	1501220	PTC13020-B	1501320	PTC13020-H	
★ 130/5.1 x 25/1.0	300 x 12	3600	1501121	PTC13025-C	1501221	PTC13025-B	1501321	PTC13025-H	
★ 130/5.1 x 30/1.2	300 x 12	3600	1501122	PTC13030-C	1501222	PTC13030-B	1501322	PTC13030-H	
140/5.5 x 18/0.7	300 x 10	3000	1501123	PTC14018-C	1501223	PTC14018-B	1501323	PTC14018-H	
152/6.0 x 25/1.0	300 x 8	2400	1501124	PTC15225-C	1501224	PTC15225-B	1501324	PTC15225-H	

Leaf									
Size (mm/inch)	Packing unit (pcs x set)	Entries (pcs)	Code	Product number	Code	Product number	Code	Product number	
83/3.3 x 40/1.6 x 16/0.6	200 x 30	6000	1501150	PTL08340-C Leaf	1501250	PTL08340-B Leaf	1501350	PTL08340-H Leaf	

Oval									
Size (mm/inch)	Packing unit (pcs x set)	Entries (pcs)	Code	Product number	Code	Product number	Code	Product number	
★ 103/4.1 x 67/2.6 x 31/1.2	200 x 20	4000	1501170	PTK10067-C Oval	1501270	PTK10067-B Oval	1501370	PTK10067-H Oval	
★ 120/4.7 x 65/2.6 x 20/0.8	500 x 12	6000	1501171	PTK12065-C Oval short	1501271	PTK12065-B Oval short	1501371	PTK12065-H Oval short	
120/4.7 x 65/2.6 x 25/1.0	500 x 12	6000	1501172	PTK12065-C Oval tall	1501272	PTK12065-B Oval tall	1501372	PTK12065-H Oval tall	

※ Sizes shown are base diameter and height.



Paint

Solid brown

White

Nature

Brown

Material Bleached kraft/PET

Material Unbleached kraft/PET

Code	Product number	Code	Product number	Code	Product number	Code	Product number	Code	Product number
1501400	PTC03020-P	1501500	PTC03020-S	1501600	PTC03020-W				
1501401	PTC06020-P	1501501	PTC06020-S	1501601	PTC06020-W	1501701	PTC06020-N	1501801	PTC06020-J
1501402	PTC06520-P	1501502	PTC06520-S	1501602	PTC06520-W				
1501403	PTC07520-P	1501503	PTC07520-S	1501603	PTC07520-W				
1501404	PTC07522-P	1501504	PTC07522-S	1501604	PTC07522-W	1501704	PTC07522-N	1501804	PTC07522-J
1501405	PTC07530-P	1501505	PTC07530-S	1501605	PTC07530-W				
1501406	PTC08020-P	1501506	PTC08020-S	1501606	PTC08020-W				
1501407	PTC08025-P	1501507	PTC08025-S	1501607	PTC08025-W				
1501408	PTC08030-P	1501508	PTC08030-S	1501608	PTC08030-W				
1501409	PTC09020-P	1501509	PTC09020-S	1501609	PTC09020-W				
1501410	PTC09030-P	1501510	PTC09030-S	1501610	PTC09030-W	1501710	PTC09030-N	1501810	PTC09030-J
1501411	PTC10030-P	1501511	PTC10030-S	1501611	PTC10030-W				
1501412	PTC11020-P	1501512	PTC11020-S	1501612	PTC11020-W				
1501413	PTC11025-P	1501513	PTC11025-S	1501613	PTC11025-W				
1501414	PTC11030-P	1501514	PTC11030-S	1501614	PTC11030-W				
1501415	PTC11815-P	1501515	PTC11815-S	1501615	PTC11815-W				
1501416	PTC11821-P	1501516	PTC11821-S	1501616	PTC11821-W				
1501417	PTC12030-P	1501517	PTC12030-S	1501617	PTC12030-W				
1501418	PTC12515-P	1501518	PTC12515-S	1501618	PTC12515-W				
1501419	PTC12520-P	1501519	PTC12520-S	1501619	PTC12520-W				
1501420	PTC13020-P	1501520	PTC13020-S	1501620	PTC13020-W				
1501421	PTC13025-P	1501521	PTC13025-S	1501621	PTC13025-W				
1501422	PTC13030-P	1501522	PTC13030-S	1501622	PTC13030-W				
1501423	PTC14018-P	1501523	PTC14018-S	1501623	PTC14018-W				
1501424	PTC15225-P	1501524	PTC15225-S	1501624	PTC15225-W				

We can also produce items in different sizes to those shown here. Please contact a sales representative for more details.

Code	Product number	Code	Product number	Code	Product number
1501450	PTL08340-P Leaf	1501550	PTL08340-S Leaf	1501650	PTL08340-W Leaf

Code	Product number	Code	Product number	Code	Product number
1501470	PTK10067-P Oval	1501570	PTK10067-S Oval	1501670	PTK10067-W Oval
1501471	PTK12065-P Oval short	1501571	PTK12065-S Oval short	1501671	PTK12065-W Oval short
1501472	PTK12065-P Oval tall	1501572	PTK12065-S Oval tall	1501672	PTK12065-W Oval tall



If you require a shape or size other than those shown here, please feel free to make an inquiry. We can also create original designs for you. Please consider these options when making your choice!